



# OKINAWA CITY

# Newsletter

March 2020 Vol. 20 No. 3

Okinawa-shi Yakusho Bunka geino Ka (B1) 26-1 Nakasone-Cho, Okinawa City, Okinawa 904-8501

## Information

### Cancellation

The following events announced on February Newsletter were cancelled to prevent the spread of coronavirus infection:

- The 9th Okinawa City Brass Band Festival (Mar. 15)
- Additional Public Health Check-up (Mar. 15)



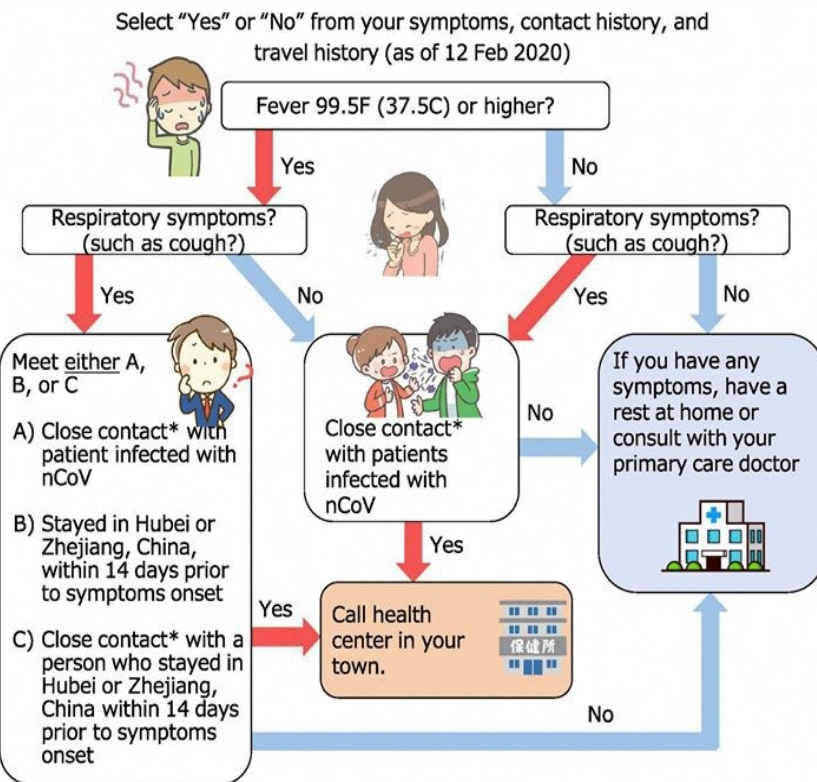
### To Parents:

Okinawa City Public Schools (Elementary/Junior High) will **close from Mar. 4 until the end of school year.**

**Public Kindergartens** is accepting children with a regular schedule. However, we are asking parents to take each child's body temperature every morning and if they shows higher than **37.5c**, please keep them home to prevent the infection within a kindergarten.

To secure yourself and others from virus, please **stay away from crowds** as much as possible, make sure you **wash your hands correctly**, wear a mask to cover your mouth and nose and follow the **coughing/sneezing manners** (wear a mask/ cover your mouth and nose/ cover them with your sleeves, not hand when you cough or sneeze).

## If you think you are infected with COVID-19...



\*Close contact means:

1. Living with the suspected patients or prolonged contact with them (in a car, on an airplane, etc.)
1. Caring for suspected patients without proper PPE
2. Highly likely to have directly touched the patient's sputum or saliva

**If you suspect you are infected, first call your local health center (HC) before visiting the hospital.** The public health centers will ensure suspected patients will be connected to the proper medical institutions. In some cases, we may ask you to see a general clinic if it is considered appropriate.

Health Centers			
North HC	0980-52-5219	Miyako HC	0980-73-5074
Chubu HC	098-938-9701	Yaeyama HC	0980-82-4891
South HC	098-889-6591	Naha City HC	098-853-7971

**English, Chinese, and Korean are available at 03-6636-4816**



Total Population: 142,708

[Japanese Population] Male: 68,133 Female: 72,769  
[Foreign Population (55 Countries)] Male: 1,128 Female: 678



The Okinawa City Hall's *Bunka Geino Ka* (the Culture & Traditional Arts Division) selects excerpts from the city's public relations newsletter (*Koho Okinawa*) and published them in English and Chinese in hopes of better serving our community of residents who may have difficulty reading or understanding Japanese. **These articles are translated by the Culture & Traditional Arts Division staff and are provided for reference only. Services are provided in Japanese only (unless otherwise indicated).** For English support, please email: [kokusai@city.okinawa.lg.jp](mailto:kokusai@city.okinawa.lg.jp). You can also view monthly issues of the newsletters and other information about living in Okinawa City by clicking the ENGLISH/中文 link on the Okinawa City website: <http://www.city.okinawa.okinawa.jp/>

# Administrative Announcements



## ► Notice From The National Health Insurance Division: Your Insurance Certificates Must Be Renewed In March.

New certificates will be mailed to the following households

1. Households who have completed making insurance premium payments by January 31 and are not behind on any payments. Households that pay by account transfer must have completed payments for the past years and up to the 7th payment term in the current fiscal year.

- New certificates will be sent **Beginning of March**.

2. Households with no record of late payments and have completed payments by March 2.

- New certificates will be sent between **mid to late March**.

\*Your new insurance certificates will be enclosed in the mail. If you are not at home, a claim notice will be left in your mailbox. Please contact the number on the notice.



Old<Green>

NEW<Pink>

The following households must receive their new certificate at the National Health Insurance Division service counter.

Households who make payments after the deadline or have overdue payments, or have addresses within a military base, please come to the National Health Insurance Division service counter **between March 16 (Mon)~ 30 (Tue)** to receive your new insurance certificate.

\* Households who are not able to complete their payments can receive their new insurance certificate after receiving a payment consultation.

**What to bring** to the service counter to receive your new insurance certificate:

- ① The postcard you received notifying you to renew your insurance certificate, your current insurance certificate and the head of household's *inkan* (seal).
- ② Your ID (driver's license, etc) and *inkan*.
- ③ National health insurance premium bills (to confirm receipts)

\* Dependents who will move outside of Okinawa City to attend school must provide a certificate of school registration, and for moving to facilities, admission certificate is required.

Contact: *Kokumin Kenko Hoken ka* (National Health Insurance Division Benefits Section) ext. 2107, 2112

## ► If You Leave Behind Payment on Medical Care for The Elderly Insurance Premium

If you receive a phone call from 098-921-2410 by a company (Okinawa Shi Denwa Saikoku Center) entrusted by Okinawa City, you might be behind payment for Medical Care for The Elderly Insurance Premium

Phone call will be made during the daytime or between 17:00-20:00 on weekdays, and weekends to inform you with your payment status and introduction to automatic bank transfer system.

Contact: *Kokumin Kenko Hoken ka* (National Health Insurance Division) ext. 2128,2129



## ► Special Payment Application For Students (National Pension)

People, even students, must enroll in the National Pension System when they turn 20 years old. For students who earn less than the amount specified by the Japanese National Pension System, the "Special Payment System for Students" offers a reprieve from payments regardless of family income.

**Eligibility** :Students of universities, colleges, high schools, or special technical schools under the School Education Act, or other institutes which offer courses for more than a year.

**Valid Term** : April 1 (Wed), 2020-

**Required Documents** : If the student applies: School certificate, student ID, etc. to prove that they are attending school.

If a proxy applies on behalf of the student: ID, *inkan* (a power of attorney will be required if the proxy is not from the same household).

Please visit the division in charge for more information.

Contact: *Shimin Ka, Kokumin Nenkin Tanto* (Residents Division, persons in charge) ext. 2131/ 2133  
Koza Pension Office TEL: 098-933-2267



**All services are provided in JAPANESE ONLY** (unless otherwise indicated). For postal and emailing services, or any inquiries in ENGLISH, please email: [kokusai@city.okinawa.lg.jp](mailto:kokusai@city.okinawa.lg.jp)

Okinawa-shi Yakusho Bunka Geino Ka (B1) 26-1 Nakasone-Cho, Okinawa City, Okinawa 904-8501



▶ **Please Note:**

**March** is the payment deadline for the following taxes:

**Long-term care insurance premium** (10th term)/ **Medical care for the elderly insurance premium** (9th term). If you use automatic bank transfers, payments will be withdrawn on **March 31!** Make sure you have enough money in your bank account the day before!!

▶ **FY 2020 Residents' Public Health Check-up Schedule**

**Reservation is available**

**Making reservations and preparing some exams to submit at home (stool/urinal test) will save you time and allow a more smooth process.**

Please check the schedule on the Health Check-up Guide which will be mailed to you in late March (blue envelope).

Reservation is available on the following dates:

① **Date: Oct.10 (Sat)** Only in the morning

Venue: Sangyo Koryu Center

(Address: 1-11-25 Awase, Okinawa City)

Reserve between: Sep. 14 (Mon)- 18 (Fri)

Capacity: 100

② **Date: Nov.8 (Sun)** Only in the morning

Venue: Medical Examination Center of Chubu Medical

Assn. (Address: 1-584 Miyagi, Chatan Town)

Reserve between: Oct.12 (Mon)-16 (Fri)

Capacity: 50

③ **Date: Dec.19 (Sat)** Only in the morning

Venue: Okinawa City Hall

Reserve between: Nov.16 (Mon)-20 (Fri)

Capacity: 100

\*Drop-ins are acceptable on ① and ③.



To make a reservation, please call Shimin Kenko Ka (Residents' Health Division) at **098-939-3126**.

This health check-up is also for those who are under regular treatment for chronic diseases because it will give you some different examinations. Do not miss this for a general follow-up on your health once a year.

**FYI:**

The annual cost for lifestyle-related diseases treatment:

Those who took health check-up

—¥6,597/ person

Those who **have not** take health check-up

—**¥39,028**/ person

You might spend a lot more for medical treatment if you do not take the annual health check-up...!



▶ **Photochemical Oxidant Alert**

Photochemical Oxidant is formed by nitrogen oxide contained in gas from factories and when exhaust gas from vehicles are changed into toxic material for human body by ultraviolet light.

The density of it tends to be higher during March and June in Okinawa. It does not give serious side-effects to us immediately, however, please refrain from unnecessary outdoor activities and protect yourself as much as possible if an photochemical oxidant alert is announced.

Announced by Central Public Health and welfare Center



▶ **FY2020 Okinawa City Schools Lunch Fee Aid**

In order to support parents with multiple children, Okinawa City provides financial support for school lunch fees. This aid is provided to the third child and every child born after. You must apply for this service every year. Please make sure you don't forget to apply.



**Eligible Children:** Children in the family who are enrolled at an elementary or junior high school in Okinawa City, and are the third child or younger out of siblings who go to elementary and junior high school.

**Requirements to receive aid:** Children must be Okinawa City residents. They must not be receiving public assistance or meet the standards to receive public assistance.

**Application period:**

**March 2 (Mon),2020 – Feb 10(Wed), 2021**

**Application form:** You can get it at your children's school or you can also download it from the Okinawa City website. \*You need to apply for the aid each year.

**Where to apply:** Your third children's school office

**Contact:** Okinawa City *Gakko Kyushoku* Center (School Lunch Center) TEL: 929-4776

▶ **Premium Rate For Employment Insurance Will Change From March, 2020 (Payment in April)**

**Health Insurance** 9.95% (Now) ⇒ **9.97%**(After March)

**Long-term Care Insurance** 9.95% (Now) ⇒ **9.97%**(After March)

\*The premium rate for the voluntarily-continued insured will change from April, 2020 (payment in April). The rate differs depends on the prefecture.

**Contact:** Japan Health Insurance Association TEL: 098-951-2246

**All services are provided in JAPANESE ONLY** (unless otherwise indicated). For postal and emailing services, or any inquiries in ENGLISH, please email: **kokusai@city.okinawa.lg.jp**

# ▶ The Residential Division Will Be Very Crowded In March & April

The service counter will be very busy with change of address procedures during March and April.

**Service Hours/ 8:30– 17:15** (Except for Sat, Sun and Japanese Holidays)

\*Please understand it can take more than two hours to complete paperwork when it is crowded.

\*The procedure for My Number card, the update or issuance of resident record regarding basic resident register card is NOT available after 17:15.

## [Certificate Issuance Using My Number Card Is Available At Convenience Stores]

Certificates that you can get issued:

- Copy of Resident Record
- Inkan Registration Certificate
- Family Registration (Transcript/Extract)
- Copy of Family Registration-Address History
- Income Certificate
- Income Taxation Certificate

Service Hours: **6:30 - 23:00**(Available on Sat, Sun and Japanese holidays)

\*Except for Dec. 29-Jan.3 of the following year and maintenance day.

Contact: Shimin Ka (Residential Division) Ext.3121



# ▶ Sewer Rate Will Be Raised After April 1, 2020

The sewer rate has been the same for 20 years in an effort to improve the sewer connection rate, and also to reduce costs. However, we have decided to raise the sewer rate since it has been severe in maintaining the budget each year.



\*A per-unit price increases as the volume of water consumption increases in this rating system.

After revision, the basic fee will be raised from ¥500 to ¥600 (tax not included) and the per-unit price will be raised at ¥18 to ¥32 depending on the volume of water consumption.

**Comparative Chart of Sewer Rate**

Volume	After Revision	Before Revision	Difference Per month
10 m <sup>2</sup>	¥660	¥550	¥110
20 m <sup>2</sup>	¥1,584	¥1,276	¥308
30 m <sup>2</sup>	¥2,508	¥2,002	¥506
40 m <sup>2</sup>	¥3,685	¥2,926	¥759
50 m <sup>2</sup>	¥4,862	¥3,850	¥1,012

\*The new price will be applied on the sewer rate on the meter read after May 1, 2020.

Contact: Gesuido Ka (Sewerage Division) Ext.2535

# ▶ A Secondary Public Parking Is Available

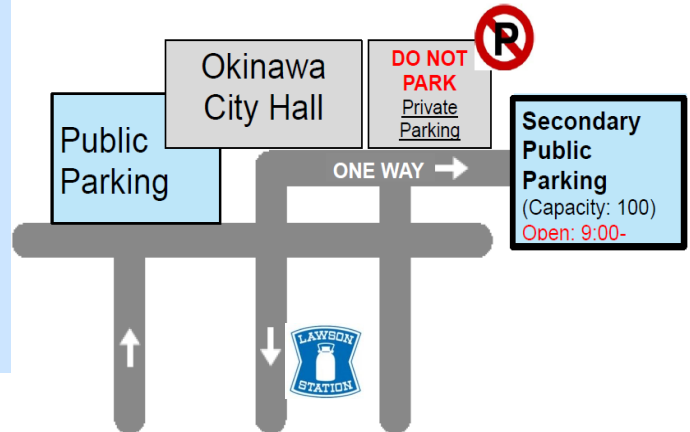
Thank you always for your understanding on the usage of our public parking. Please use the secondary public parking when the main public parking is full.

Also, please allow the nearest parking spot to be open for the physically disabled, the elderly, and pregnant women.

Thank you for your cooperation during congestion.

Contact: Keiyaku Kanzai Ka

(Contract Custodianship Division) Ext. 2096



# Okinawa City Library News

**Book readings & hand games:** Saturdays, March 21, & 28 starting at 3:00 pm

**Days Closed:** Library will be temporarily closed between **Mar. 1-15(Sun)** to prevent the spread of coronavirus infection. Also 16 (Mon), 20 (Fri: Spring Equinox Day), 23 (Mon), 26 (Thu: for inspection), and 30 (Mon). ※Up to 20 books per person.

**Address:** 2-28-1 Chuo, Okinawa City Korinza Mall (1F) TEL: 098-929-4919



Would you like our newsletters emailed or mailed to you? Let us know!

Email: [kokusai@city.okinawa.lg.jp](mailto:kokusai@city.okinawa.lg.jp)

You can also visit, call or fax us at:

Okinawa-shi Yakusho Bunka Kanko Ka (5F)  
26-1 Nakasone-Cho, Okinawa City, Okinawa  
Tel: (098) 929-0261 FAX: (098) 939-7341

Visit our website NOW!



http://www.city.okinawa.jp/english/

http://www.city.okinawa.jp/english/

## Koza International Plaza

Contact KIP for free Japanese classes, legal consultations, fun events and MORE!

1-17-15 Chuo, Okinawa City

TEL 989-6759 FAX 989-6758

Monday-Sunday 10:00~ 21:00

E-mail: [okinawa\\_kip@yahoo.co.jp](mailto:okinawa_kip@yahoo.co.jp)

<https://ja-jp.facebook.com/ociakip>



**All services are provided in JAPANESE ONLY** (unless otherwise indicated). For postal and emailing services, or any inquiries in ENGLISH, please email: [kokusai@city.okinawa.lg.jp](mailto:kokusai@city.okinawa.lg.jp)

Okinawa-shi Yakusho Bunka Geino Ka (B1) 26-1 Nakasone-Cho, Okinawa City, Okinawa 904-8501