



# OKINAWA CITY Newsletter

April 2017 Vol. 17 No. 4

Okinawa-shi Yakusho Bunka Geino Ka (B1) 26-1 Nakasone-Cho, Okinawa City, Okinawa 904-8501

## Announcements

### Okinawa City Library Reopening in Korinza Mall

In commemoration of the Okinawa City Library's relocation to Korinza Mall (1F), there will be a lecture presentation, preview, and opening ceremony held as below.

#### ■Commemoration Lecture

“The need to carry on traditions of Okinawan culture.”  
April 23 (Sun)14:30- @ Ashibina Theater (Korinza 3F)  
Free admission (\*Numbered ticket required)

Numbered ticket distribution schedule:

Between April 5 (Wed)~12 (Wed) for Okinawa City Citizens.

General distribution after

April 13 (Thu).

@ Okinawa City Hall 7F

Up to two tickets per person

#### ■New Library Preview

April 29 (Sat)~30 (Sun)10:00-15:00

#### ■Opening Ceremony

May 3 (Wed) 14:00~ @ Korinza 1F

Contact: Library Relocation Project Team ☎929-4127

(9:00~17:00, except weekends and holidays)



### ▶ Individual Number Cards Will be Issued on the Weekend Shown Below

In addition to weekdays, the City Residential Division will be open on the following date to issue individual number cards.

#### Open Date & Time:

**May 6 (Sat) & 7 (Sun)**

**9:00~11:30** \*Available only in the morning.

**Where:** City Residential Division counter, Okinawa City Hall 1F

**Note:** You must contact the Residential Division in advance before visiting to confirm what you will need.

\*My Number is required when you file your tax. Please make sure you receive your notification card/ My Number card as soon as possible.

Contact: *Shimin Ka* (Residential Division) Ext. 3127/ 3128/ 3115



### ▶ Special Payment Application for Students (National Pension)

People, even students, must enroll in the National Pension System when they turn 20 years old. For students who earn less than the amount specified by the Japanese National Pension System, the “Special Payment System for Students” offers a reprieve from payments regardless of family income .

**Eligibility :**Students of universities, colleges, high schools, or special technical schools under the School Education Act, or other institutes which offer courses for more than a year.

**Valid Term:** April 2017~March 2018

**Required Documents :** If the student applies: School certificate, student ID, etc. to prove that they are attending school.

If a proxy applies on behalf of the student: ID, *inkan* (a power of attorney will be required if the proxy is not from the same household).

Please visit the division in charge for more information.

Contact: *Shimin Ka, Kokumin Nenkin Tanto* (Residents Division, persons in charge) ext. 2131/ 2133/ 2134



Total Population: 141,543

[Japanese Population] Male: 67,758 Female: 72,369  
[Foreign Population (46 Countries)] Male: 838 Female: 578



The Okinawa City Hall's *Bunka Geino Ka* (the Culture & Traditional Arts Division) selects excerpts from the city's public relations newsletter (*Koho Okinawa*) and published them in English and Chinese in hopes of better serving our community of residents who may have difficulty reading or understanding Japanese. **These articles are translated by the Culture & Traditional Arts Division staff and are provided for reference only. Administrative services are provided in Japanese only (unless otherwise indicated).** For English support, please email: [kokusai@city.okinawa.okinawa.jp](mailto:kokusai@city.okinawa.okinawa.jp). You can also view monthly issues of the newsletters and other information about living in Okinawa City by clicking the ENGLISH/ 中文 link on the Okinawa City website: <http://www.city.okinawa.okinawa.jp/>

## Administrative Announcements

### ▶ Combined Measles and Rubella (MR) 2nd Term Vaccination

Getting your child vaccinated twice with the MR vaccination is a highly effective way to prevent them from getting Measles and Rubella. Your child should first get vaccinated when they are 1 years old, then for a second time a year before they start elementary school. The 2nd term MR vaccination for 2017 is as follows:

**Eligible Children:**

Those born between April 2, 2011 (Heisei 23) ~April 1, 2012 (Heisei 24)

**Vaccination Period:** April 1, 2017 (Sat) ~March 31, 2018 (Sat)

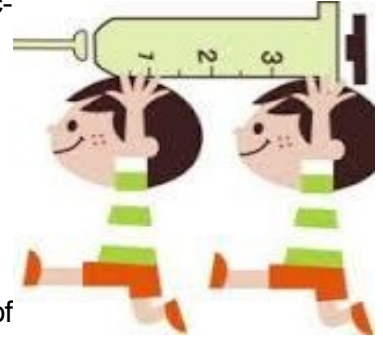
**Frequency:** One time

**Fee:** FREE

**Vaccination Location:** Designated medical facilities (appointments required)

※April through June is the MR vaccination reinforcement period. The effects of prevention are enhanced when everyone eligible gets vaccinated during this time.

※Vaccination types and schedules in foreign countries (including military bases) may differ. Please come to the service window to confirm your child's vaccination history.



**Contact:** *Kodomo Sodan/ Kenko ka, Yobo gakari*

(Child Consultation/ Health Division Vaccination Section) ext. 2232, 2233



### ▶ Tuition is to be Withdrawn From Your Account

Tuition for nursery school or kindergarten is to be withdrawn from an account in principle.

Please contact *Hoiku-Yochien Ka* (Child care/ Kindergarten Division) for more details on the process.

Ext. 3135/ 3179 (Nursery school)

Ext. 3136/ 3174 (Kindergarten)



### ▶ FY 2017 School Expense Subsidies

Okinawa City provides subsidies for part of school expenses to parents who have financial difficulty in their elementary and junior high school children's school attendance.

Eligible expenses: school meal, school trip, stationaries, etc.

Please contact your child's school or visit the *Gakumu Ka* website for more details about the application process.

Contact: *Gakumu Ka* (Education Affairs Division) ext. 2723 or your child's school office.



### ▶ Disability Benefit System

●**Special Disability Benefits (at least 20 years old)**

This benefit is available to people who are at least 20 years old and lives at home with a severe disability, and needs special and constant assistance throughout the day. People who are staying at a care facility or are hospitalized are not eligible for this benefit.

●**Welfare benefits for Disabled Children (under 20 years old)**

This benefit is available to children under 20 years old and lives at home or are currently in a hospital with a severe disability, and need special and constant assistance throughout the day. Children who are staying at a care facility are not eligible for this benefit.

**How to apply:** You must provide a doctor's statement and other documents. Please contact the division in charge for details.

**Regarding the revision of the amount of Special Disability (Children/ Welfare) Benefit**

Based on the national Price Index for the fiscal year 2016, which was disclosed as of January 27, 2017, the amount of benefits will be revised to decrease at 0.1% as of April 2017.

**Special Disability Benefits : ¥26,830 (—¥20 from the previous year amount)**

**Welfare benefits for Disabled Children: ¥14,600 (—¥20 from the previous year amount)**

\*If you are already receiving benefits, please notify *Shogai Fukushi Ka* of any major changes, such as a change to your name or address, if you entered a care facility, are in a hospital for more than three months, or the beneficiary is deceased. If you continue receiving benefits without submitting the appropriate notice, you will be required to return the full amount that you have received.

**Contact:** *Shogai Fukushi Ka*

(Disabilities Welfare Division, Person in Charge of Special Disabilities Benefits) ext. 3158

**All services are provided in JAPANESE ONLY** (unless otherwise indicated). For postal and emailing services, or any inquiries in ENGLISH, please email: [kokusai@city.okinawa.okinawa.jp](mailto:kokusai@city.okinawa.okinawa.jp)

Okinawa-shi Yakusho Bunka Geino Ka (B1) 26-1 Nakasone-Cho, Okinawa City, Okinawa 904-8501



▶ **Please Note:**

April is the payment deadline for the following tax:

**Real-estate Tax** (1st term).

If you use automatic bank transfers, payments will be withdrawn on May 1. Make sure you have enough money in your bank account the day before!!

▶ **Regarding Health Screening/ Brain Screening**

**Announcement from the Residents Health Division (ext.2240)**

● **Eligibility for Health Screening Has Been Expanded**

Current Eligibility: Those enrolled in National Health Insurance/ Medical Care System for People Aged 75 and Over

The following people are also eligible starting the FY 2017:

- Those between ages 30 and 34 enrolled in National Health Insurance.
- Those between ages 30 and 39 who have insurance that is not National Health Insurance (with insurance at the workplace, but no chance to receive a health checkup).
- Public assistance (welfare) recipients who are ages 35 and over.
- Social Insurance holders (non-employed dependents only) who are ages 40 and over.



● **Cheaper if You Use the Coupon**– Out of the health screening, Okinawa City will cover expenses for the basic checkup (general/specified/ longevity checkups) and cancer screening (stomach/ lung/ colon cancer).

● **You Can Make an Appointment for the Checkup at a Designated Hospital**– Make sure you bring your health insurance certificate and the coupon. \*The coupon has been sent in a blue envelope at the end of March. See the enclosed guide for more details and the list of designated hospitals and prices.

**Announcement from the Medical Care System for the Aged Section (ext. 2118/ 2128)**

**Medical Care System for the Aged 75 and Over Certificate Holders:**

After the FY 2017, health screening recipients need to make an appointment at a designated hospital and submit their longevity & cancer checkup coupon from the Residents Health Division to the hospital.

\*The fees calculated after the coupons must be payed out-of-pocket.

\*\*For the brain screening, please receive a written acknowledgement at the service counter as usual.

Please call the section above for more information.

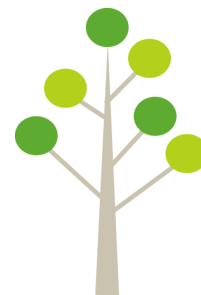
**Announcement from the National Health Insurance Division**

(ext. 2117 for brain screening / 2240 for coupons)

**Eligible Residents for Brain Screening are as Follows:**

Certificate holders who were born between April 2, 1942 and March 31, 1983 (\*Those who were born between April 2, 1942 and March 31, 1943 are eligible until the day before their birthday.)

How to Get the Screening: Health screening recipients need to make an appointment at a designated hospital and submit their longevity health insurance certificate & checkup coupons that was sent in a blue envelope from the Residents Health Division.



▶ **Issuance of Acupuncture, Moxibustion and Shiatsu Massage Vouchers**

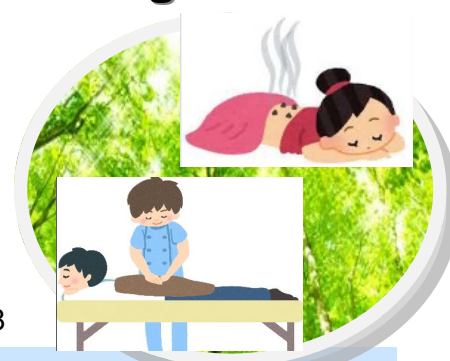
- You can apply to receive a voucher pad that includes 6 tickets.
- Each ticket is worth ¥1,000 and can be used at any designated medical facility.
- Bring your medical insurance certificate and inkan to apply.

If someone applies on your behalf, they must provide their ID and *inkan*.

**Applications will start on April 3 (Mon.) starting at 8:30**, and will close once the limit of 150 is reached.

\*Please be aware that the vouchers will expire on **March 30, 2018.**

**Contact:** National Health Insurance Administrative Division ext. 2118, 2128



**All services are provided in JAPANESE ONLY** (unless otherwise indicated). For postal and emailing services, or any inquiries in ENGLISH, please email: [kokusai@city.okinawa.okinawa.jp](mailto:kokusai@city.okinawa.okinawa.jp)

Okinawa-shi Yakusho Bunka Geino Ka (B1) 26-1 Nakasone-Cho, Okinawa City, Okinawa 904-8501



▶ **Announcement Regarding a ¥15,000 Allowance**  
**“Rinji Fukushi Kyufu Kin”**  
**(Temporary Allowance with Economic Policy)**

**Eligibility:**

- \*Those who were not taxed for residential tax for the fiscal year 2016.
- \*Those who have been registered in Okinawa City as of January 1, 2016.
- \*Those who were eligible for Temporary Welfare Allowance (¥3,000) in 2016.

**However:**

Dependents of a taxed resident or those who are receiving public assistance are not eligible.

**Amount of Allowance:** ¥15,000 per person (one-time payment).

**Application Period:** **April 10, 2017 (Mon) – October 10, 2017 (Tue)**

- It must be marked by the deadline.

**Application Process:** The application form will be sent by mail to those who are potentially eligible for the allowance starting the beginning of April.



**Contact:** Allowance for the Elderly/ Temporary Welfare Allowance Service Counter (Okinawa City Hall Basement Level 2) TEL: 098-894-6122



▶ **Basic Life-saving Certification (Category 1)**

<CPR/AED/Homeostatic method used in Adults> \*Classes are provided in Japanese only.

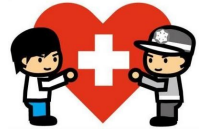
**Date:** April 18 (Tue) **Time:** 14:00- 17:00

**Location:** Fire Dept. Yamauchi Branch

**Capacity:** 15 **Fee:** Free

(Certificates will be issued to all participants who complete the class.) Please call below to sign up.

**Contact:** 沖縄市消防本部 (Okinawa Shi Shobo Honbu) Okinawa City Fire Department Headquarter TEL:098-929-0900



沖縄防災情報ポータル  
**ハイサイ！防災で〜びる**

**The Okinawa Disaster management Information Portal**

“ハイサイ！防災で〜びる(Haisai! Bosai Debiru)”

offers information regarding disaster management and updates in Okinawa Prefecture in **Japanese, English, Chinese and Korean.** Disaster Management Information Email Distribution Service



For Smart Phone



Registration for Email Services

**Okinawa City Library News**

The library will be **closed** between February 1, 2017 (Wed)~ May 2 (Tue) due to its relocation to Korinza Mall.

Library will be **open** on **May 3 (Wed)** at Korinza Mall.

Please **return your books** to the book post installed below during the time we are closed.

\*Note: CD/ DVDs cannot be returned by book post.

**Okinawa City Hall** (1F) 8:30-17:15 \*Closed on Saturdays/ Sundays/ Holidays

**Address:** 26-1 Nakasone-cho, Okinawa City

**Library** (Culture Center 2F) 8:30-21:00 \*Open on Saturdays/ Sundays/ Holidays

**Address:** 2-19-6 Uechi, Okinawa City



Would you like our newsletters emailed or mailed to you? Let us know!

Email: [kokusai@city.okinawa.okinawa.jp](mailto:kokusai@city.okinawa.okinawa.jp)

You can also visit, call or fax us at:

Okinawa-shi Yakusho Bunka Geino Ka

沖縄市役所 文化芸能課 (B1)

26-1 Nakasone-Cho, Okinawa City, Okinawa

Tel: (098) 929-0261 FAX: (098) 939-7341



**Koza International Plaza**

Contact KIP for free Japanese classes, legal consultations, fun events and MORE!

1-17-15 Chuo, Okinawa City

TEL 989-6759 FAX 989-6758

Monday-Sunday 10:00~ 21:00

E-mail: [okinawa\\_kip@yahoo.co.jp](mailto:okinawa_kip@yahoo.co.jp)

<https://ja-jp.facebook.com/ociakip>



**All services are provided in JAPANESE ONLY** (unless otherwise indicated). For postal and emailing services, or any inquiries in ENGLISH, please email: [kokusai@city.okinawa.okinawa.jp](mailto:kokusai@city.okinawa.okinawa.jp)

Okinawa-shi Yakusho Bunka Geino Ka (B1) 26-1 Nakasone-Cho, Okinawa City, Okinawa 904-8501