



OKINAWA CITY Newsletter

April 2018 Vol. 18 No. 4

Okinawa-shi Yakusho Bunka Geino Ka (B1) 26-1 Nakasone-Cho, Okinawa City, Okinawa 904-8501

Announcements Okinawa City's PR Movie Can Now be Viewed on the Koza Web Website!



A PR movie for you to see Koza in a totally different light that none of us has ever seen before! The video has already reached 280,000 views since it has been released. Please check it out for yourself!

► Miyazato Children's Center Opens On April 14th!

2-7-24 Higashi, Okinawa City
(Parking available)

This center is open for children from 0 to under 18 years old, their parents, and parent clubs/groups.

Opening Hours: Mon-Sat (10:00-16:00)

*Closed on Sundays, Japanese holidays, end-of-the-year holiday and June 23rd.

Contact: Kodomo Katei Ka
(Children's Welfare Division) Ext.3193/3191



► What Is The Community General Support Center?

To get the information regarding long-term care support for your family, you can visit the Community General Support Center in your community. Visit their PR event scheduled below for concerns like:

- What should I do with my parents with dementia?
- I'm looking for some place that can I can help with my time.

Event Date & Time: April 26 (Thu) & 27 (Fri) 10:00-16:00

Place: Okinawa City Hall 1F, Lobby, etc. **Admission is FREE**

Content: You can join the Exercise for Longevity (14:00-15:00 both days), consultation booth (Café corner), exhibition booth

Contact: Korei Fukushi Ka (Elderly Welfare Division). Ext. 3095



► Please Read If You Have Not Received Your "My Number Notification Card" ...



The "My Number Notification Card" has been sent to each head of household by registered postal mail (with a status of not being forwarded to a new address) after October 2015. If you have not received the notification card, please contact the Residential Division to confirm if your mail has been returned to the city hall.

Hours: Monday– Friday 8:30-17:00
(Except for Japanese holidays and Dec.29-Jan.3)

Where: Residential Division Counter

Contact: Shimin Ka (Residential Division) Ext.3127/3128

Total Population: 141,540

[Japanese Population] Male: 67,725 Female: 72,302
[Foreign Population (50Countries)] Male: 904 Female: 609

The Okinawa City Hall's *Bunka Geino Ka* (the Culture & Traditional Arts Division) selects excerpts from the city's public relations newsletter (*Koho Okinawa*) and published them in English and Chinese in hopes of better serving our community of residents who may have difficulty reading or understanding Japanese. **These articles are translated by the Culture & Traditional Arts Division staff and are provided for reference only. Administrative services are provided in Japanese only (unless otherwise indicated).** For English support, please email: kokusai@city.okinawa.okinawa.jp. You can also view monthly issues of the newsletters and other information about living in Okinawa City by clicking the ENGLISH/ 中文 link on the Okinawa City website: <http://www.city.okinawa.okinawa.jp/>

Administrative Announcements

▶ Combined Measles And Rubella (MR) 2nd Term Vaccination In FY 2018

Getting your child vaccinated twice with the MR vaccination is a highly effective way to prevent them from getting Measles and Rubella. Your child should first get vaccinated when they are 1 years old, then for a second time a year before they start elementary school. The 2nd term MR vaccination for 2018 is as follows:

Eligible Children:

Those born between April 2, 2012 (Heisei 24) ~April 1, 2013 (Heisei 25)

Vaccination Period: April 1, 2018 (SUN) ~March 31, 2019 (SUN)

Frequency: One time

Fee: FREE

Vaccination Site: Designated medical facilities (appointment required)

※April through June is the MR vaccination reinforcement period. The effects of prevention are enhanced when everyone eligible gets vaccinated during this time.

※Vaccination types and schedules in foreign countries (including military bases) may differ. Please come to the service window to confirm your child's vaccination history.



Contact: *Kodomo Sodan/ Kenko ka, Yobo gakari*

(Child Consultation/ Health Division Vaccination Section) ext. 2232, 2233

▶ Tuition Is To Be Withdrawn From Your Account

In principle, tuition for nursery school or kindergarten is to be withdrawn from your bank account.

Please contact *Hoiku-Yochien Ka* (Child care/ Kindergarten Division) for more details on the process.
Ext. 3135/ 3179 (Nursery school)
Ext. 3173/ 3174 (Kindergarten)



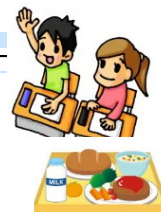
▶ FY 2018 School Expense Subsidies

Okinawa City provides subsidies for part of school expenses to parents who have financial difficulty in their elementary and junior high school children's school attendance.

Eligible expenses: school meal, school trip, stationaries, etc.

Please contact your child's school or visit the *Gakumu Ka* website for more details about the application process.

Contact: *Gakumu Ka* (Education Affairs Division) ext. 2723/2724 or your child's school office.



▶ Disability Benefit System

●Special Disability Benefits (at least 20 years old)

This benefit is available to people who are at least 20 years old and lives at home with a severe disability, and needs special and constant assistance throughout the day. People who are staying at a care facility or are hospitalized are not eligible for this benefit.

●Welfare benefits for Disabled Children (under 20 years old)

This benefit is available to children under 20 years old and lives at home or are currently in a hospital with a severe disability, and need special and constant assistance throughout the day. Children who are staying at a care facility are not eligible for this benefit.

How to apply: You must provide a doctor's statement and other documents. Please contact the division in charge for details.

Regarding the revision of the amount of Special Disability (Children/ Welfare) Benefit

Based on the national Price Index for the fiscal year 2017, which was disclosed as of January 26, 2018, the amount of benefits will be revised to increase at 0.5% as of April 2018.

Special Disability Benefits : ¥26,940 (+ ¥130 from the previous year amount)

Welfare benefits for Disabled Children: ¥14,650 (+ ¥70 from the previous year amount)

*If you are already receiving benefits, please notify *Shogai Fukushi Ka* of any major changes, such as a change to your name or address, if you entered a care facility, are in a hospital for more than three months, or the beneficiary is deceased. If you continue receiving benefits without submitting the appropriate notice, you will be required to return the full amount that you have received.

Contact: *Shogai Fukushi Ka*

(Disabilities Welfare Division, Person in Charge of Special Disabilities Benefits) ext. 3157



All services are provided in JAPANESE ONLY (unless otherwise indicated). For postal and emailing services, or any inquiries in ENGLISH, please email: kokusai@city.okinawa.okinawa.jp

Okinawa-shi Yakusho Bunka Geino Ka (B1) 26-1 Nakasone-Cho, Okinawa City, Okinawa 904-8501



▶ **Please Note:**

April is the payment deadline for the following tax:

Real-estate Tax (1st term).

If you use automatic bank transfers, payments will be withdrawn on May 1.

Make sure you have enough money in your bank account the day before!!

▶ **Issuance of Acupuncture, Moxibustion And Shiatsu Massage Vouchers**

- You can apply to receive a voucher pad that includes 6 tickets.
- Each ticket is worth ¥1,000 and can be used at any designated medical facility.
- Bring your medical insurance certificate (Medical Care System for People Aged 75 and over/*Koki Koreisha Iryo Hoken*) and *inkan* to apply.

If someone applies on your behalf, they must provide their ID and *inkan*.

Applications will start on April 2 (Mon.) starting at 8:30, and will close once the limit of 150 is reached.

*Please be aware that the vouchers will expire on **March 31, 2019**.

Contact: National Health Insurance Administrative Division ext. 2118, 2128



▶ **Community & School Facilities Will Be Open For Public Use**

You can use designated rooms at each school for your life-long learning activities.

Facilities Available: Community & School facilities in Okinawa City (10 Elementary Schools and 3 Junior High Schools listed below).

Open Hours: Mon-Fri (18:00-22:00)/Sat & Sun, holidays (9:00-22:00) *Please understand that school activities take priority of this service.

Eligibility: Groups of more than 10 people who reside, work, or go to school in Okinawa City (regardless of the school district as long as the principal approves). * Children can only use facilities with an adult's supervision.

How to Apply: Applications have to be processed through each school's management director under the approval of the Board of Education. Contact the applicable school listed below for details.

<Available Schools and Their Contact>

Yamauchi Elementary School (ES)933-6562/ Kitami ES 937-3616/ Murokawa ES 938-2177/ Misato ES 938-8844/ Mihara ES 934-0021/ Awase ES 934-2122/ Hiyagon ES 930-0581/ Nakanomachi ES 933-3054/ Shimabukuro ES 933-3365/ Takahara ES 937-3618/ Yamauchi Junior High School (JHS) 933-4793/ Misato JHS 937-3614/ Okinawa-higashi JHS 934-9460

Contact: *Shogai Gakushu Ka* (Career Planning Division) Ext. 2743

▶ **Free KIDS Cooking Class**

Hey kids! Let's get prepared to make your Mother's Day special with your cooking!

Date & Time: May 12 (Sat) 10:00-noon (Bring your apron, cooking cap and towel)

Place: Okinawa City Welfare Culture Plaza (Address: 7-35-1 Takahara, Okinawa City)

Eligibility: Children who reside in Okinawa City (6 years old to 6th grade Elementary school)

Capacity: 16 **Application Deadline:** **May 1 (Tue) 15:00** **Contact:** Residents Health Division Ext.2242



▶ **JA Okinawa Misato Br. Community Food Products Festival**

Date & Time: April 21 (Sat) 9:30-16:00/ 22(Sun) 10:00-17:00

Place: Okinawa City Agricultural Training Center (Address: 2380 Noborikawa, Okinawa City)

You can eat beef/goat soup and other foods, buy farm products, Chibana textile fabrics, and enjoy a lot of entertainments like Eisa and Ryukyuan dance performances, a lottery, etc. **Organizer:** JA Okinawa Misato Branch



▶ **Basic Life-saving Certification**

Category 1 <CPR/AED/Homeostatic method used in Adults>

Date: April 24 (Tue) **Time:** 14:00- 17:00 **Location:** Fire Dept. Misato Branch

Category 3 <CPR/AED/Homeostatic method/ Foreign body Removal used in infants and kids>

Date: April 19(Thu) **Time:** 14:00- 17:00 **Location:** Fire Dept. Misato Branch

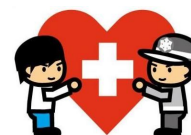
Capacity: 30 **Fee:** Free ***Classes are provided in Japanese only.**

(Certificates will be issued to all participants who complete the class.) Please call below to sign up.

Application: By phone. Mon-Fri (9:00-17:15) Closed on weekends and Japanese holidays.

Contact: 沖縄市消防本部 (**Okinawa Shi Shobo Honbu**) Okinawa City Fire Department Headquarter

TEL:098-929-0900



All services are provided in JAPANESE ONLY (unless otherwise indicated). For postal and emailing services, or any inquiries in ENGLISH, please email: kokusai@city.okinawa.okinawa.jp

Okinawa-shi Yakusho Bunka Geino Ka (B1) 26-1 Nakasone-Cho, Okinawa City, Okinawa 904-8501

► Special Payment Application For Students (National Pension)

People, even students, must enroll in the National Pension System when they turn 20 years old. For students who earn less than the amount specified by the Japanese National Pension System, the "Special Payment System for Students" offers a reprieve from payments regardless of family income.

Eligibility :Students of universities, colleges, high schools, or special technical schools under the School Education Act, or other institutes which offer courses for more than a year.

Valid Term : April 2018~March 2019

Required Documents : If the student applies: School certificate, student ID, etc. to prove that they are attending school.

If a proxy applies on behalf of the student: ID, *inkan* (a power of attorney will be required if the proxy is not from the same household).

Please visit the division in charge for more information.

Contact: *Shimin Ka, Kokumin Nenkin Tanto* (Residents Division, persons in charge) ext. 2131/ 2133/ 2134



まいにち にほんご Daily Nihongo

色 (いろ Iro) Color

Let's learn How to tell a color in Japanese. It will help you improving your quality of conversation in Japanese.

白(しろ *Shiro*-White) **黒**(くろ *Kuro*-Black) **赤**(あか *Aka*-Red)

青(あお *Ao*-Blue) **黄色**(きいろ *Kiuro*-Yellow)

緑(みどり *Midori*-Green) **紫**(むらさき *Murasaki*-Purple)

オレンジ(おれんじ *Orenji*-Orange)



Japanese Expression with "Color"

赤の他人(*Aka no tanin*: Complete stranger)

青ざめる(*Ao zameru*: Turning pallid for sickness or fear)

白い目で見られる(*Shiro-i mede mirareru*: Being looked down)

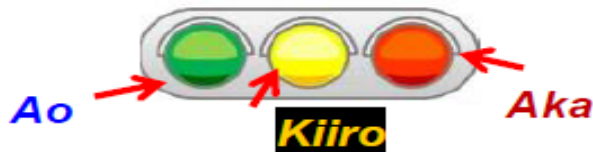
Why Japanese call "Ao(Blue)" for green on the traffic light.?

This is true. We never call *Midori* (Green) for the green light.

One theory explains that this is because Japanese express the color of leaves "Ao" from the old times, such as we call "Ao yasai" for greens.



"Ao Yasai"



But don't get it wrong. That doesn't mean we cannot tell the difference between these two colors. If you ask us "What color is the *Ao shingo* (Blue light)?" and of course we would answer "It's *Midori*(green)."

Okinawa City Library News

Book readings & hand games: Saturdays, April 14, 21, & 28 starting at 3:00 pm

Days Closed: April. 2 (Mon), 9 (Mon), 16 (Mon), 23 (Mon), 26 (Thu: for inspection), 29 (Sun: Showa Day), and 30(Mon). ※Up to 20 books per person.

Address: 2-28-1 Chuo, Okinawa City Korinza Mall (1F) TEL: 098-929-4919



Would you like our newsletters emailed or mailed to you? Let us know!

Email: kokusai@city.okinawa.okinawa.jp

You can also visit, call or fax us at:

Okinawa-shi Yakusho Bunka Geino Ka

沖縄市役所 文化芸能課 (B1)

26-1 Nakasone-Cho, Okinawa City, Okinawa

Tel: (098) 929-0261 FAX: (098) 939-7341



Koza International Plaza

Contact KIP for free Japanese classes, legal consultations, fun events and MORE!

1-17-15 Chuo, Okinawa City

TEL 989-6759 FAX 989-6758

Monday-Sunday 10:00~ 21:00

E-mail: okinawa_kip@yahoo.co.jp

<https://ja-jp.facebook.com/ociakip>

All services are provided in JAPANESE ONLY (unless otherwise indicated). For postal and emailing services, or any inquiries in ENGLISH, please email: kokusai@city.okinawa.okinawa.jp

Okinawa-shi Yakusho Bunka Geino Ka (B1) 26-1 Nakasone-Cho, Okinawa City, Okinawa 904-8501