

# OKINAWA CITY Newsletter

September 2020 Vol. 20 No. 9

Okinawa-shi Yakusho Bunka Geino Ka (B1) 26-1 Nakasone-Cho, Okinawa City, Okinawa 904-8501

## Events & Announcements

### Announcement: Event Cancellations

To prevent COVID-19 infection, the following events have been cancelled: Thank you for your understanding.

●Okinawa City Industry Festival (in JAN 2021) **CANCELLED**

### Okinawa City Hall Will be closed on September 21(Mon) & 22(Tue)

Okinawa City Hall will be closed on September 21(Mon) & 22(Tue) for Japanese holiday. For schedules of other public facilities, please contact them directly. Thank you for your understanding.

## ▶ Okinawa City Temporary Financial Support

### 1. Expense Coverage Support in Hiring Specialists for Financial Grant Consultation

**Eligibility:** ①You must be a sole proprietor or corporate person whose main office is located in Okinawa City. ②You have already paid the specialists for consultation. ③You must be complete in city tax payments (this includes those who got permission of postponement for tax payment).

**Amount of Coverage:** Up to 30,000 yen per consultation case (available up to three times per owner)

**Eligible Period:**

Consultation and payments completed between April 1, 2020 -February 26, 2021.

**Application Deadline:** February 26, 2021 (Fri).

### 2. Free Consultation for Financial Grants

**Period:** Until December 24, 2020 (Thu)

**Location:** Okinawa City Hall Basement Lv.1 (Next to the store)

**Hours:** ①13:00 ②14:00 ③15:00 ④16:00

\*Consultation service will be offered within an hour.

**You have to make a reservation for the consultation.**

**Hours for Reservation:** Monday-Friday 8:30-17:15

(Closed on weekends and Japanese holidays)

**Inquiries & Reservations for 1 & 2:** Industrial & Commercial Development Division 098-929-3300

### 3. Financial Grant for Farmers, Livestock Breeders and Fishermen

**Eligibility:** Those whose income reduced because of COVID-19 (there are requirements).

**Grant Amount:** 100,000 yen

**Application deadline:** September 30, 2020 (Wed)

For detailed requirements and information, Contact Agriculture, Forestry and Fishery Division (Ext.3229)



Total Population: 142,960

[Japanese Population] Male: 68,265 Female: 72,823  
[Foreign Population (59 Countries)] Male: 1,186 Female: 686



The Okinawa City Hall's *Bunka Geino Ka* (the Culture & Traditional Arts Division) selects excerpts from the city's public relations newsletter (*Koho Okinawa*) and publishes them in English and Chinese in hopes of better serving our community of residents who may have difficulty reading or understanding Japanese. **These articles are translated by the Culture & Traditional Arts Division staff and are provided for reference only. Administrative services are provided in Japanese only (unless otherwise indicated).** For English support, please email: [kokusai@city.okinawa.lg.jp](mailto:kokusai@city.okinawa.lg.jp). You can also view monthly issues of the newsletters and other information about living in Okinawa City by clicking the ENGLISH/中文 link on the Okinawa City website: <http://www.city.okinawa.okinawa.jp/>

## Administrative Announcements

### ▶ Please note:

**September** is the payment deadline for the following taxes:

**Long-term care insurance premium (4<sup>th</sup> term)/ National health insurance premium (3<sup>rd</sup> term)/ Medical care for the elderly insurance premium (3<sup>rd</sup> term).**

If you use automatic bank transfers, payments will be withdrawn on September 30. Make sure you have enough money in your bank account the day before.



### ▶ The Exemption of Pension Premiums Before and After Childbirth

This exemption system has started in April 2019. The exemption period will be recorded as “paid” and will be reflected on your old-age basic pension amount.

**Period of Exemption:** From one month before up to 4 months after the month of the expected delivery date or the actual delivery day.

In case of multiple births, the period of exemption is given from 3 months before to 6 months after the month of the expected delivery date or the actual delivery day.

**Eligibility:** Category1 insured person of the pension system, and their delivery date was on February 1, 2019 or later.

\*Delivery is defined as a birth that happens after 85 days (or more than 4 months) of pregnancy (includes stillbirth/miscarriage/early delivery cases).

**Notification Period:** At the earliest, 6 months before the delivery due date. You can also submit it after the delivery.

**Required Documents:** Mother and Child Health Record Book or certification issued by the hospital.

※ID and *Inkan* of the proxy will be required when submitted by a proxy.

※A Power of Attorney will be required if the proxy is not of the same household.

**Contact:** National Pension Section, Okinawa City Hall (ext. 2133/ 2134)



### ▶ Current Status Report on Nursery School Tuition Coverage Service

If you are receiving and also wish to continue receiving nursery school tuition coverage, you need to submit the current status report as indicated below.

-If you are certified for nursery school tuition coverage, submit required forms to your school or *Hoiku Yochien Ka* (Nursery/ kindergarten Division) in Okinawa City Hall.

-If you are using services at a private nursery school out side of Okinawa City, a temporary day care, sick-kids care, or only family support center, submit them at *Hoiku Yochien Ka* (Nursery/ kindergarten Division) in Okinawa City Hall.

**Application Period: September 1 (Tue) - 30 (Wed), 2020**

\*If you do not complete this process, you will no longer be eligible for this coverage. Please complete the process during the designated period above.

**Contact:** *Hoiku Yochien Ka*  
(Nursery School/Kindergarten Division)  
Ext. 3174/3139



### ▶ Please Complete Vaccinations During Each Vaccination Period

Each of the regular vaccinations are scheduled for age groups that are most likely to suffer from the infection.

Starting with the vaccination scheduled at 2 months old is very effective to protect them from infections.

Going to get vaccinated is **NOT considered an unnecessary outing**.

Please make sure to protect against infection and complete the vaccinations within each vaccination period.

\*Some hospitals provide a room or time frame for vaccination receivers that's separate from regular hospital patients.

\* Some children with SOFA status may apply to some vaccinations.

**Contact:** *Kodomo Sodan/Kenka Ka* (Child Consultation-Health Division), Ext. 2232/ 2233



### ▶ My Number Notification Card Storage Limitation: **December 25 (Fri), 2020**

If you have not applied for your “My number card”, please make sure you have your “my number notification card” because notification cards returned to Okinawa City Hall will be disposed after Dec. 25, 2020 (Fri) and no longer be able to get reissued. Please contact Residential Division for the details.

**Weekend My Number Card Issuance: September 12 (Sat) 9:00-11:30 @ 1F Residential Division** Contact: Ext. 3128

**All services are provided in JAPANESE ONLY** (unless otherwise indicated). For postal and emailing services, or any inquiries in ENGLISH, please email: [kokusai@city.okinawa.lg.jp](mailto:kokusai@city.okinawa.lg.jp)

Okinawa-shi Yakusho Bunka Geino Ka (B1) 26-1 Nakasone-Cho, Okinawa City, Okinawa 904-8501

### ▶ National Census 2020 国勢調査


The National Census is held as an important statistical research every 5 years. All residents and households including foreign residents in Japan are subject to the census. The research will start on **October 1, 2020 (Thu)**. (Census sheets will be mailed to your house mid-September.) It is not based on where you are registered, but based on where you actually live as a household. The call center is open until October 31 (Sat) for any questions or more details: 057-07-2020 (8:00-21:00 daily).

**CAUTION:** An inspector will never contact you over the phone nor ask you for your income /bank account information. They must visit your house in person with their ID with face photo.

Website (English) > <https://www.kokusei2020.go.jp/en/index.html>

Contact: Policy Planning Division (Ext. 2325/2326/2327/2385)

### ▶ Preventing Accidental Bite by Pet Dogs


 **Do not let your pets loose! Keep your pets under control while outside.**

Dog bite accidents, such as “Somebody else’s pet dog bit me,” and “My dog got off the leash and bit someone” have been reported in Okinawa City every year. These accidents can happen when the owners are not able to manage their dogs properly, and some cases can be very serious.

 **To prevent dog bite accidents**


- Keep your dog on a leash with proper length while walking.
- The person walking the dog should be able to keep them under control.
- Mind your safety when you get close to any dogs, as even quiet dogs can be aggressive against kids or other dogs.
- Make sure your dog’s collar and leash are in good condition so your dog doesn’t get loose.
- Contact the Environmental Division in Okinawa City

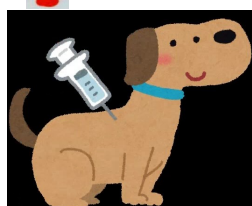


 **Hall immediately if your dog gets loose.**

**If you find a loose dog...**

Keep a record of their appearance (color of their hair or collar, dog breed, etc.) and contact the Environmental Division in the Okinawa City Hall immediately. If the city hall is closed, call #110 for the nearest police station.

 **Register your dogs and get their rabies shot**



The owner is obligated by law to have their dogs older than 91 days from birth registered (once) and get rabies shot (yearly). Registered dogs must wear the registration tag and vaccination certificate.

\* All residents, including SOFA status residents, who own dogs in Okinawa City (outside U.S. bases) are obligated to follow this requirement.

\*The public rabies shot, which is annually scheduled at each community center, has been cancelled due to prevent the spread of COVID-19.

Contact Environment Division Ext.2222

**English support is available at this division.**

### ▶ Okinawa City Community Bus Tickets are on Sale

You can buy 11 tickets as a set at the price worth 10 tickets. You will save the price of one ride per set.

**Where to Buy:**

Okinawa City Hall 5F

*Toshi Kotsu Tanto* (都市交通担当)

**Hours:** 9:00-16:30

**Price (sold as a set of 11 tickets):**

200 yen tickets	2,000 yen
100 yen tickets	1,000 yen
50 yen tickets	500 yen

**Contact:** *Toshi Kotsu Tanto* (都市交通担当)

Ext. 2520/2519



### ▶ Notice Regarding Subsidies for People (Older than 20 Years Old) Who No Longer Apply to the “Medical Expense Grant System for Pediatric Chronic Illness”

This is a subsidy for those who have received grants from the “Medical Expense Grant System for Pediatric Chronic Illness” or were subject to the “Medical Research Project on Pediatric Chronic Illness Treatment” in the past and are still under treatment for a disease caused by a pediatric chronic illness.

**Eligibility:** You must be an Okinawa City citizen older than 20 years old as of September 1, 2020, registered under the basic resident register, and apply to the conditions below:

- You are currently under treatment for a disease which is caused by a pediatric chronic illness, and able to submit a doctor’s diagnosis and other documents to certify your eligibility.
- You are not receiving benefits for a “Medical Expense Subsidy for Severe Physical Disability” or “Special Disability” from Okinawa City.
- You are not receiving benefits for medical expenses (designated intractable diseases).

\*If you are not sure if you apply for this grant system, please come to the service window for confirmation.

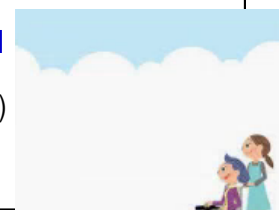
**Application period:**

**Sep. 1 (Tue), 2020 – Mar. 31 (Wed), 2021**

Amount of payment: ¥10,000/ year

*Shogai Fukushi Ka* (Disabilities Welfare Division) ext. 3157

**English speaking staff is available.**



**All services are provided in JAPANESE ONLY** (unless otherwise indicated). For postal and emailing services, or any inquiries in ENGLISH, please email: [kokusai@city.okinawa.lg.jp](mailto:kokusai@city.okinawa.lg.jp)

Okinawa-shi Yakusho Bunka Geino Ka (B1) 26-1 Nakasone-Cho, Okinawa City, Okinawa 904-8501

### ► Information: Consultation Contacts Regarding COVID-19 Infection

If you recognize any symptoms which seems like a COVID-19 infection, contact following listed for consultation:  
Okinawa Pref. Call Center TEL:098-866-2129 (24Hrs including weekends & Japanese holidays)  
Central Public Health Center TEL: 098-938-9701 (Weekdays 8:30-17:15)  
Contact hospitals before you visit your doctor.

## COVID-19 Prevention Measures to Consider When Evacuating During an Emergency

### #1. Get to know the hazards of your residential area

Check the **Okinawa City Hazard Map**  
<https://www.city.okinawa.okinawa.jp/english/>  
for information about your residential area. If an evacuation advisory is announced in an emergency situation, see if your residential area applies.  
Check #2 to #4 before you evacuate to the shelter.  
Check #5 & #6 if you need to evacuate.



### #2. Think twice if you really need to evacuate

There are some cases where it can be more safe to stay home than go out to evacuate, depending on the hazard condition. It is also very important to consider the possibility of COVID-19 infection when you evacuate.

### #3. Consider evacuating to your relatives'/friends' house

When it comes to infection risks, you should consider evacuating to your relative or friend's house for better safety instead of evacuating to a public shelter.

### #4. If you are not feeling well...

If you have a fever, a feeling of sickness, symptoms of infectious diseases, before you rush to the shelters, contact your nearest health center or medical facility to get treatment or advice.

### #5. If you need to evacuate

Depending on the scale of disaster, evacuation shelters will be out of the 4 listed below. Please contact Okinawa City Hall before you evacuate to see which shelter is available, because each shelter's capacity has been decreased to avoid crowded situations. Then, evacuate to the nearest shelter available. It is important to know the location of the shelters in advance.

#### Shelters for Typhoon

### #6. Follow shelter rules to prevent COVID-19 infection

Name of Facility	Address
Kariyushi-en	6-36-17 Chibana
Okinawa City Hall	26-1 Nakasone-cho
Okinawa City Koza Athletic Park (Budo-kan/Gym)	2-1-1 Moromizato
Welfare Culture Center	7-35-1 Taskahara

In order to reduce the infection risk in the shelter, you will be required to get a physical condition check. If you feel unwell, you will be separated to another place. We also ask for your consideration for the elderly, pregnant women, and also sick people if they need support.

Please prepare your own items you need in the shelter.  
**What you need:** Food, drinks, medicine, mask, disinfectant, thermometer, towel, tissues, battery, charger etc.



### ► FY 2020 Okinawa City Housing Opening Information

※Drawing can be held in a different way due to COVID-19 situation.  
**Application package** is available during: **October 6(Tue) - 20(Tue), 2020**  
at 1F information counter or 6F Public Housing Agency counter.  
※Please visit our website for the detailed information.  
**Contact:** Okinawa City Hall 6F Shiei Jutaku Ka (City Housing Management Division) Ext.2681/2682



### Okinawa City Library News

**To prevent the spread of COVID-19, the service is available only at the counter:**  
Please call to reserve materials you wish to rent two hours prior to your visit. Without a reservation, it can take longer to process. (Service is available only in **Japanese**.)  
Hours: 9:30-17:00 \* No reservation required for returning materials.  
**Days Closed:** 7 (Mon), 21 (Mon: Respect-for-the-Aged day), 22 (Tue: Autumnal Equinox Day), 23 (Wed: substitute holiday).  
**Address:** 2-28-1 Chuo, Okinawa City TEL: 098-929-4919



Would you like our newsletters emailed or mailed to you? Let us know!  
Email: [kokusai@city.okinawa.lg.jp](mailto:kokusai@city.okinawa.lg.jp)  
You can also visit, call or fax us at:  
Okinawa-shi Yakusho Bunka Geino Ka  
**沖縄市役所 文化芸能課 (B1)**  
26-1 Nakasone-Cho, Okinawa City, Okinawa  
Tel: (098) 929-0261 FAX: (098) 923-3485

Visit our website NOW!



**Koza International Plaza**  
**Contact KIP for free Japanese classes, legal consultations, fun events and MORE!**  
1-17-15 Chuo, Okinawa City  
TEL 989-6759 FAX 989-6758  
Monday-Sunday 10:00~ 21:00  
E-mail: [okinawa\\_kip@yahoo.co.jp](mailto:okinawa_kip@yahoo.co.jp)  
<https://ja-jp.facebook.com/ociakip>

**All services are provided in JAPANESE ONLY** (unless otherwise indicated). For postal and emailing services, or any inquiries in ENGLISH, please email: [kokusai@city.okinawa.lg.jp](mailto:kokusai@city.okinawa.lg.jp)

Okinawa-shi Yakusho Bunka Geino Ka (B1) 26-1 Nakasone-Cho, Okinawa City, Okinawa 904-8501